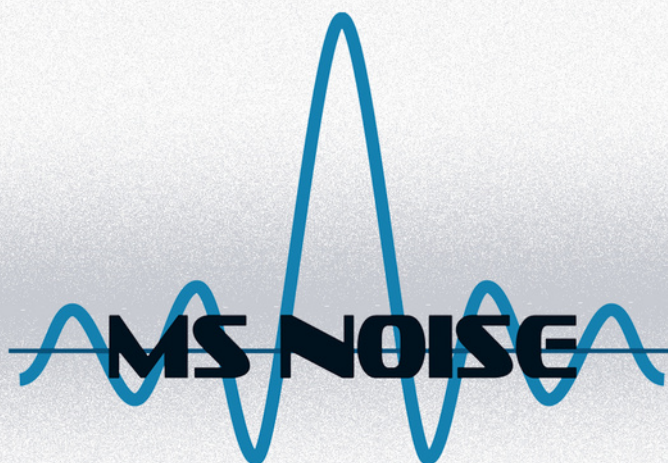




Manufacturer of **mobile benches**
for LC / GC / MS systems

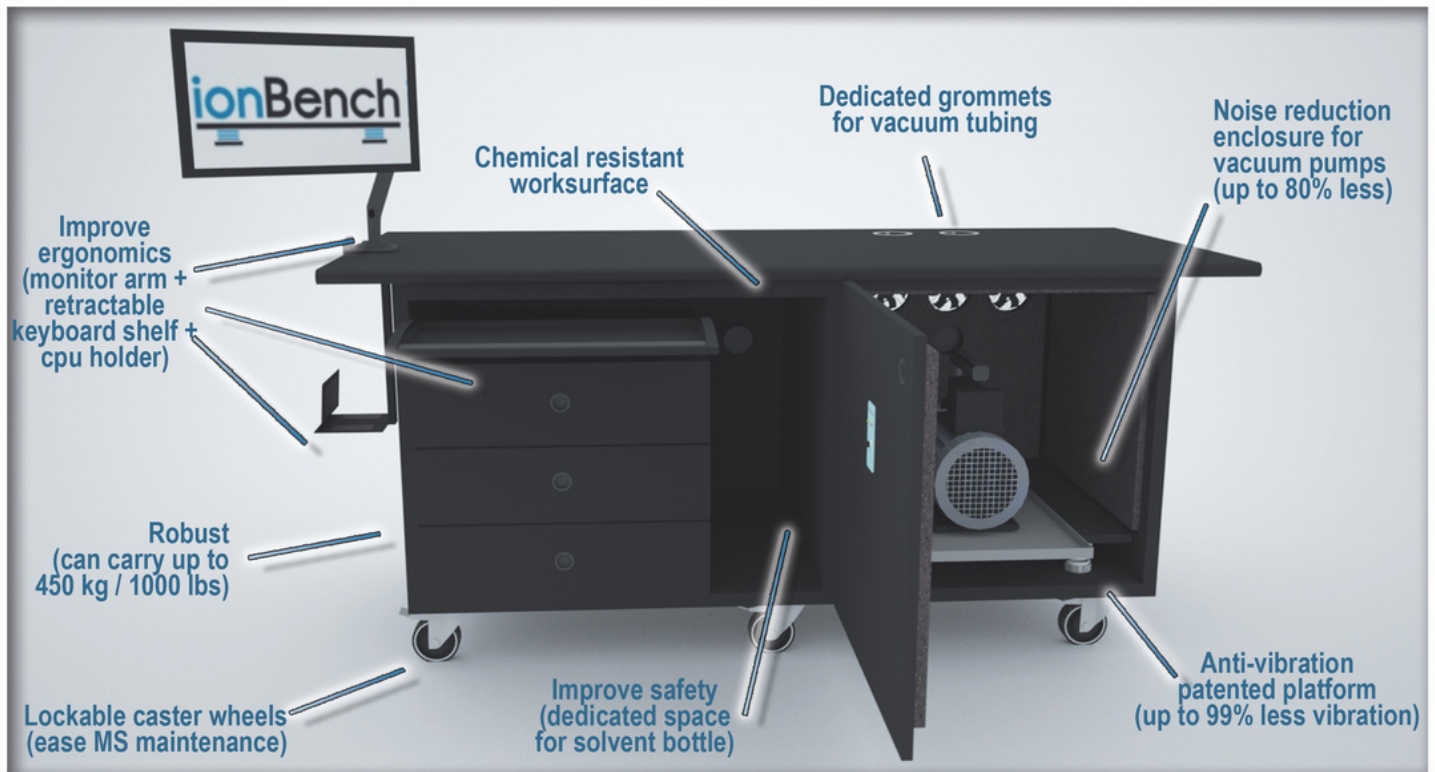


Manufacturer of **noise reduction enclosures**
for pump / chiller / ultrasonic bath /
compressor / nitrogen generator systems

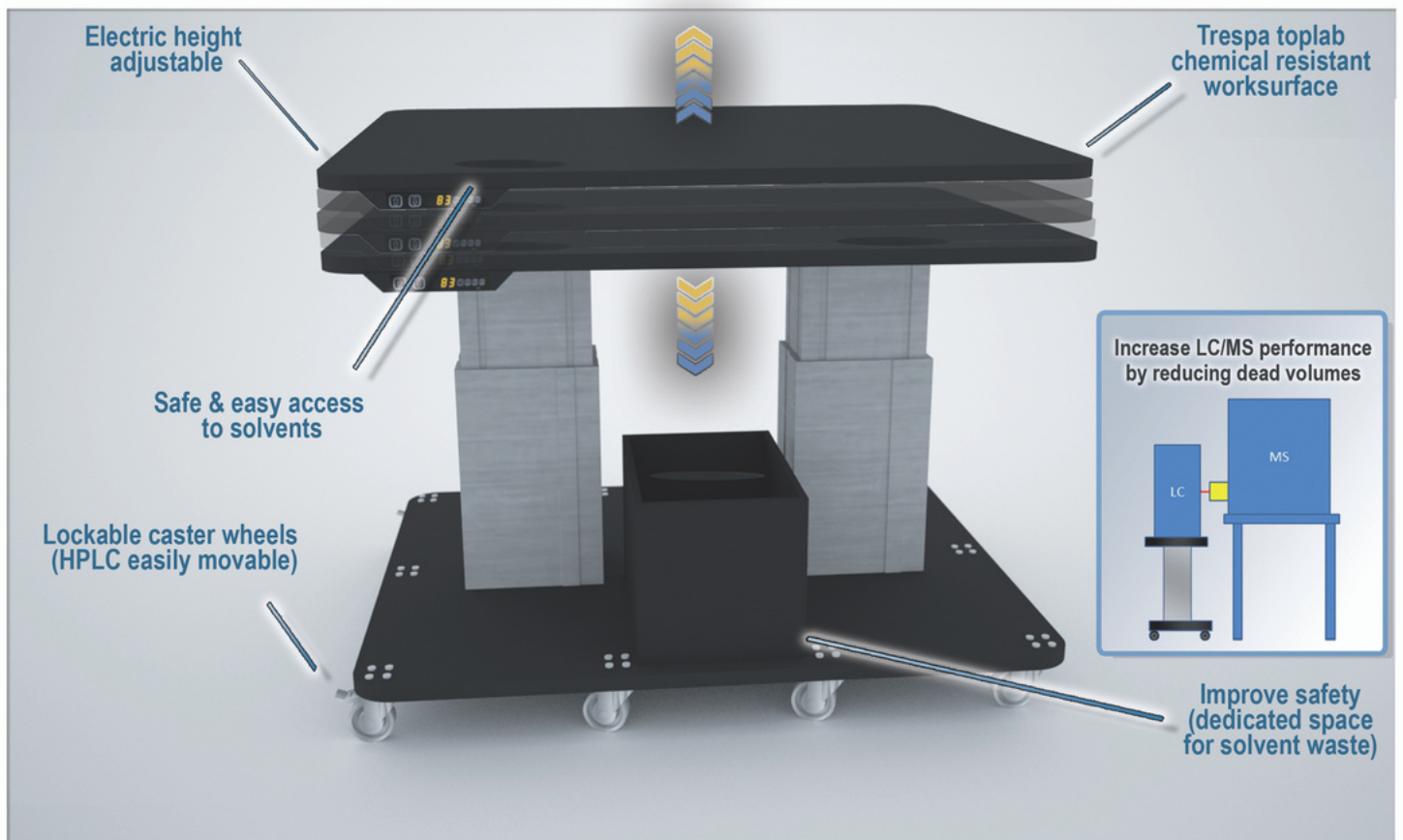
ThermoFisher
S C I E N T I F I C

Compatibility guide

MASS SPECTROMETRY

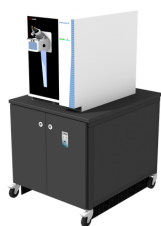


LIQUID / GAS CHROMATOGRAPHY



DEDICATED MODELS

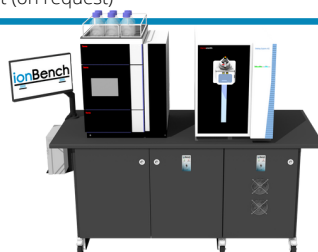
| MODEL | THERMO P/N | THERMO SUPPORTED INSTRUMENTS |
|--------------------------|------------|--|
| 120NE58 | | Mass spec. only (Q-Exactive, Endura, Quantum, LCQ, LTQ, TSQ 8000/9000, iCAP Q/RQ) GCMS (ISQ) |
| 120NE78 | | Mass spec. only (Quantiva) |
| 190NE58 | | LC (Vanquish, Ultimate) & MS (Q-Exactive, Endura, Quantum, Quantis with SV65+ pump, LCQ, LTQ, Fortis, iCAP Q/RQ + autosampler) / Q-Exactive GC & GCMS (ISQ) + computing element |
| 190NE78 | | LC (Vanquish, Ultimate) & MS (Quantiva, Altis) |
| 19088-HF-X | | Q-Exactive HF-X |
| 12088-EXP 120/240 | | Mass Spec only (Orbitrap Exploris 120/240) |
| 85100 - EXP480 | | Mass Spec only (Orbitrap Exploris 480) |
| 19088 - EXP 120/240 | | LC (Vanquish, Ultimate) & MS (Orbitrap Exploris 120/240) |
| 19088 - EXP480 | | LC (Vanquish, Ultimate) & MS (Orbitrap Exploris 480) |
| 19097 - ECODRY65+ | | LC (Vanquish, Ultimate) & MS (Quantis with Ecody65+ vacuum pump) |
| BCH190NE58-NEPK_ENC_LEFT | | Dedicated IONBENCH for ICP-MS equipment with noise enclosure for the vacuum pump on the left hand side and noise enclosure for the chiller on the right hand side |
| BCH190NE58_ENC-LEFT | | Dedicated IONBENCH for ICP-MS equipment with noise enclosure for the vacuum pump on the left hand side |
| BCH19097-ICP-OES | | Dedicated IONBENCH for ICP-OES equipment (on request) |



85100 - EXP480



BCH190NE58-ENC-LEFT



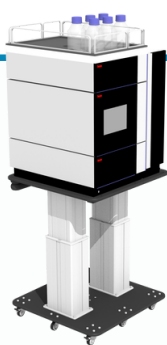
19088-EXP480



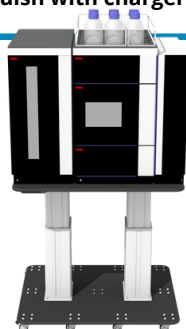
19088-HFX

DEDICATED MODELS

| MODEL | THERMO P/N | THERMO SUPPORTED INSTRUMENTS |
|-------|------------------------|--|
| 4555 | 6036.1733 | LC System (RSLC Nano Ultimate 3000 w/WPS) Range 57 to 57cm LC System (Vanquish Neo W or W/O column compartment N) |
| 6765 | 5036.1731 6036.1732 | LC System (Vanquish w/o charger, Vanquish duo, RSLC Nano Ultimate 3000 OAS) Range 57 to 75cm (5036.1731) Range 57 to 57 cm (6036.1732) LC System (Vanquish Neo W/ column compartment H) |
| 9075 | | LC System (Vanquish with charger) |



6765



9075



6765



4555

DEDICATED MODELS

| MODEL | THERMO P/N | COMPATIBILITY | MS SYSTEM COMPATIBILITY |
|----------------|----------------|--------------------------------------|--|
| NRVP-GWT-SET | | Edwards E2M28 or Edwards E2M30 | LCQ, LTQ (except Velos), TSQ 8000, ICAP Q, Quantum |
| DBL-DB30-SET | | 2x Edwards E2M28 or 2x Edwards E2M30 | LTQ Velos |
| DBL-LE-SET | 00201-99-00334 | Leybold SV65 | Q-Exactive, Endura, Fusion (x1), Lumos (x2) |
| DBL-MS40-SET | | 2x Leybold SV65 | Quantiva |
| WAT - 900/1400 | | Thermoflex 900 / 1400 | / |
| DBL-ECODRY65+ | | Ecodry65+ | / |
| ON REQUEST | | Nitrogen generator noise enclosure | / |



NRVP-GWT-SET

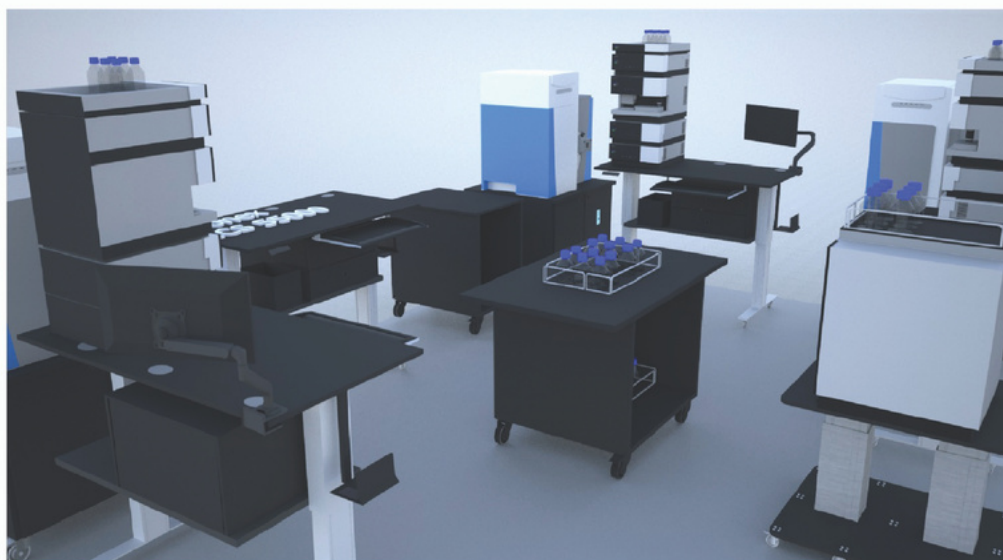


WAT-900



DBL-DB30-SET

***WITH IONBENCH, EVERYTHING IS POSSIBLE.
THE IMPOSSIBLE JUST TAKES A LITTLE LONGER***



***We also design full lab and custom bench.
Feel free to contact us for more information***